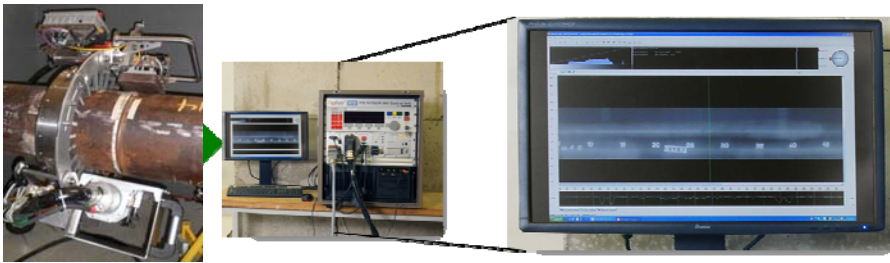


REAL TIME RADIOGRAPHY (RAYSCAN)

JANX is introducing, state of the art technology to the pipeline industry. Rayscan® - Real Time Radiography (RTR) provides instantaneous results, as it scans circumferentially around the pipe. Weld acceptability can be accomplished, in as little as 1 minute for both SWE/SWV and DWE/SWV. Rayscan® is widely recognized as the professional answer, and over the past few years the company has successfully applied this revolutionary automated digital X-ray system on a great number of occasions for testing pipeline girth welds, both on – and offshore. Following field applications, it has now been demonstrated that Automated Radiographic Testing with Rayscan offers similarly short cycle times and is the mature alternative for Automated Ultrasonic Testing (AUT).

Verification has shown that the Rayscan system complies with prevailing quality standards including, but not limited to, ASME, API and ASTM and as such can be considered as a field-proven commodity.

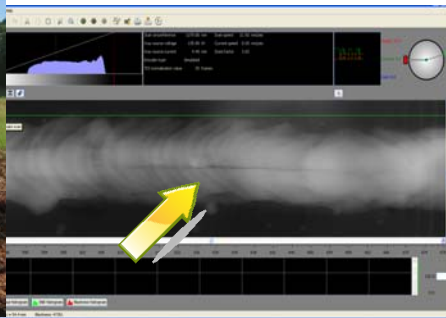
From Exposure to Results Instantly



DWE/SWV System



Real Time Image



DWE/SWV uses a external 5000 Watt High Output Tube Head which produces scans that rival anything on the market today. This application is ideally suited for Tie-ins and mainlines alike.

Advantages of Rayscan ©

- Consistent Repeatability
- Instantaneous Results
- No Inherent Processing Flaws commonly associated with conventional radiography
- Highly Improved Sensitivity
- Less Radiation To Personnel
- Can be viewed around the world in a matter on minutes after exposure
- No Chemical Or Film Storage
- Permanent Record of Data
- Adjustable Scanner For Various Size Pipe

Standards That Recognize RTR

- EN ISO
- ASME BPVC
- ASME
- API
- ASTM

SWE/SWV System

SWE/SWV is ideally suited to increase and sustain to production and quality that todays mainlines require.

